



Skyline Plaza, Alencon Link, Basingstoke RG21 7AU

£975 PCM

Luff
ASSOCIATES
letting specialists



Skyline Plaza, Alencon Link, Basingstoke. RG21 7AU

£975 PCM

- Third floor apartment
- Town centre location
- Open plan design
- No parking
- One bedroom
- Modern bathroom
- Modern kitchen
- Unfurnished



Description

This stylish third floor apartment is situated in the popular Skyline Plaza development in Basingstoke, located within walking distance of the town centre and Basingstoke mainline railway station. The communal entrance is exquisite and offers three lifts to all floors.

The well appointed apartment comprises an open plan living room and fitted kitchen with built-in appliances, triple sliding doors to the bedroom area with a recess housing a built-in wardrobe, as well as a modern bathroom with shower over the bath.

N.B. There is no parking with this property.

Unfurnished and available 30th July 2026

Council tax band: A

EPC rating: B

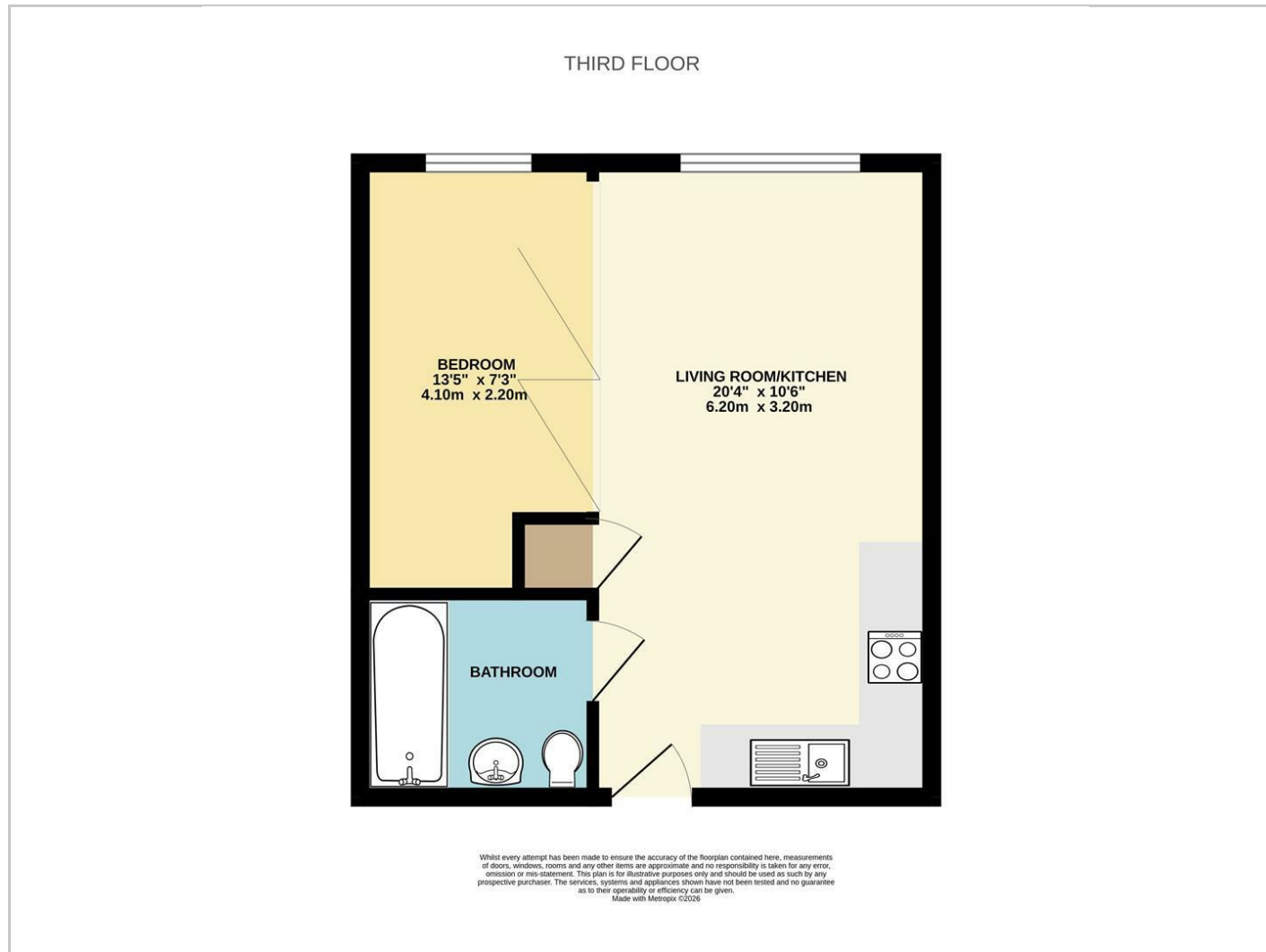
Deposit = 5 weeks rent - £1,125

First Months rent - £975

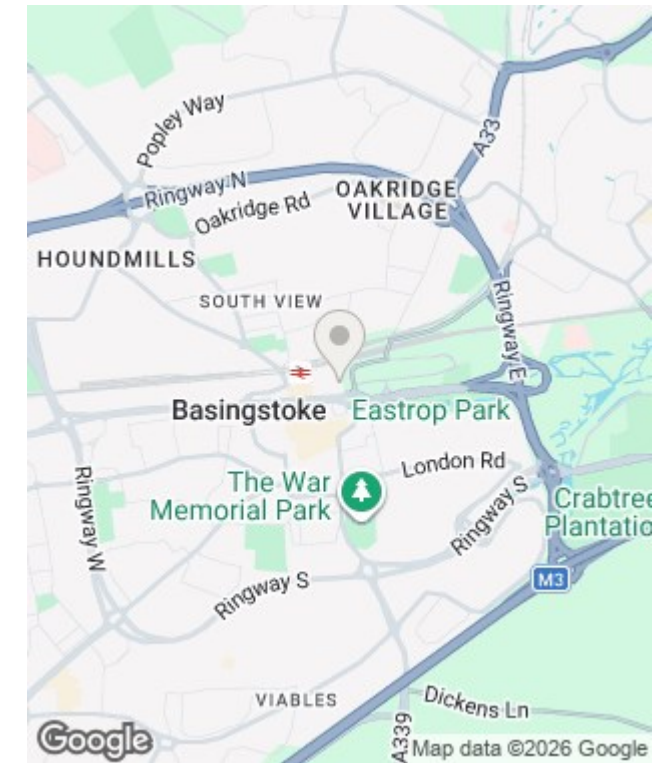
Holding deposit - £225 (will be deducted from the first months rent upon move in)



Floorplan



Area Map



Energy Efficiency Rating		Current	Potential
Very energy efficient - lower running costs			
(92 plus) A			
(81-91) B			
(69-80) C			
(55-68) D			
(39-54) E			
(21-38) F			
(1-20) G			
Not energy efficient - higher running costs			
England & Wales		EU Directive 2002/91/EC	

Environmental Impact (CO ₂) Rating		Current	Potential
Very environmentally friendly - lower CO ₂ emissions			
(92 plus) A			
(81-91) B			
(69-80) C			
(55-68) D			
(39-54) E			
(21-38) F			
(1-20) G			
Not environmentally friendly - higher CO ₂ emissions			
England & Wales		EU Directive 2002/91/EC	



In partnership with
LUFF & WILKIN
sales 01252 838 899

Disclaimer: The Rent advertised does not include the Tenancy Deposit or any fee's or charges which are payable. Further information can be obtained from the agent or at the point of viewing. These details have been prepared and issued in good faith and do not constitute representations of fact or form part of any offer or contract Luff Associates Ltd have not carried out a structural survey of the property, nor have we tested any of the services or appliances. All measurements are intended to be approximate only and all photographs show parts of the property as they were at the time they were taken. Any reference to alterations or particular use of the property wherever stated, is not a statement that planning, building regulations or other relevant sent has been obtained